



CENTRALISED LUBRICATION PROGRESSIVE SYSTEM





LUBE
Control

Lube Control Pty Ltd



LUBE
Control

Lube Control Pty Ltd

Table of Contents

CISO GP203 High Pressure Lubrication Pump.....	Page 4
CISO GT Plus High Pressure Lubrication Pump.....	Page 6
CISO GT Heavy High Pressure Lubrication Pump.....	Page 10
CISO DXF Divider.....	Page 12
CISO DSP Divider.....	Page 14
CISO DSPP Divider.....	Page 16
CISO VSP Divider.....	Page 18
LUBE CONTROL SPARE PARTS.....	Page 20

CISO GP203 HIGH PRESSURE LUBRICATION PUMP



Reliable, Affordable, Interchangeable, Engineered to Last

The CISO GP203 is the compact powerhouse trusted across fleets and industrial sites for one simple reason—it never quits. Engineered for tough environments and precision lubrication, it delivers consistent grease output that keeps your equipment running smoother, longer, and with less downtime.

- High-pressure performance in a compact footprint
- Rock-solid durability against vibration, dust, and harsh conditions
- Flexible configuration for single-point or progressive systems
- Lower maintenance costs through precise, reliable lubrication

If you want a pump that works as hard as your machinery, the CISO GP203 is the upgrade that pays for itself. The CISO GP203 is a high-pressure piston pump which is the heartbeat of a progressive multi-point lubrication system, enabling it to service up to 150 lubrication points. Up to three independent pumping elements can be installed, servicing 3 independent points or systems or the outlets can be combined to increase displacement. The pump is also equipped with an internal low fluid-level alarm. Designed for versatility, economy, and durability, the CISO GP203 features electrical connectors specifically engineered for outdoor use, providing a high level of protection.

Characteristics

- Optional control printed circuit boards with different operating settings
- Available in multiple reservoir sizes
- Reservoir with screw on lid

Application

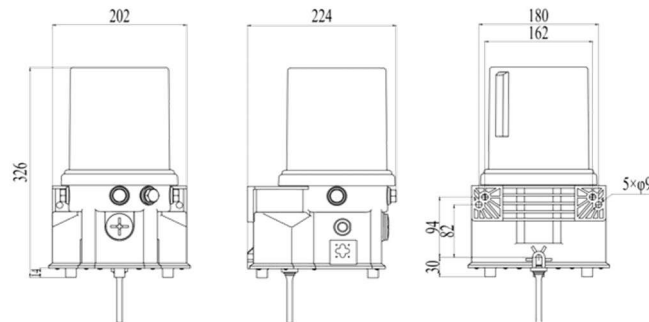
- Small to Medium-Sized Machinery
- Trucks and Trailers
- Agricultural Machinery
- Wind Power Equipment
- Mobile Equipment
- General Industry
- Construction Machinery

Technical Information

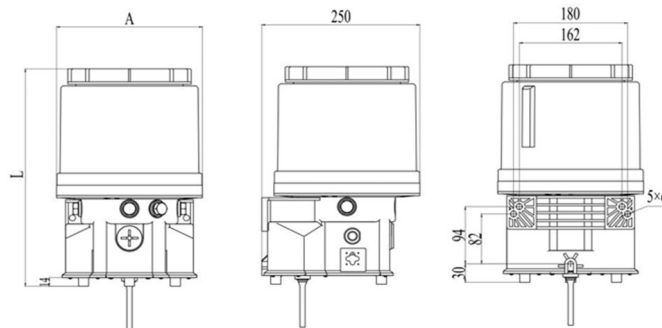
No of pump outlets	1, 2 or 3
Filling grease nipple thread	1/4BSP
Flow rate per pump element	4.4ml/min
Operating pressure	Max 30MPa, 300Bar
Reservoir sizes	2L, 4L, 8L
Lubricants	Oil (minimum 46cst), Grease NLGI 000, 00, 0, 1, 2
Voltages	12VDC, 24VDC
Operating temperature	-40C to +70C
IP Rating	IP69
Timer	Analogue
Low Level Alarm	Yes - ready for external alarm

Dimensions

2L CISO GP203



4L and 8L CISO GP203



4L	A=230.4mm	L=357mm
8L	A=230.4mm	L=460mm

Ordering Details

LC-GP203-2L-12V-TMR-LL-G	CISO GP203 Pump, - 12V lubricator, 2L, with timer, low level alarm
LC-GP203-2L-24V-TMR-LL-G	CISO GP203 Pump, - 24V lubricator, 2L, with timer, low level alarm
LC-GP203-4L-12V-TMR-LL-G	CISO GP203 Pump, - 12V lubricator, 4L, with timer, low level alarm
LC-GP203-4L-24V-TMR-LL-G	CISO GP203 Pump, - 24V lubricator, 4L, with timer, low level alarm
LC-GP203-8L-12V-TMR-LL-G	CISO GP203 Pump, - 12V lubricator, 8L, with timer, low level alarm
LC-GP203-8L-24V-TMR-LL-G	CISO GP203 Pump - 24V lubricator, 8L, with timer, low level alarm

All Australian CISO GP203 pumps come standard with:

- 1 x Pumping Element,
- 1 x Relief Valve,
- 1 x DIN Plug
- Timer Setting Pause time (hours) Run time (minutes). Can be changed upon request.

Spare Parts



1	5000423	2L Reservoir for GP203 with O-ring
2	5000424 5000424/KIT	4L Reservoir for GP203 with O-ring 4L Reservoir Kit for GP203 with Expansion plate and O-ring
3	5000425 5000425/KIT	8L Reservoir for GP203 with O-ring 8L Reservoir Kit for GP203 with Expansion plate and O-ring
4	07.00470	GP203 Timer/circuit card
5	2002813	CISO GP203 Pumping Element 4.4ml/min
6	5FJ01	Pump outlet safety valve (35Mpa)
8	101315	Top Cover/Lid only for GP203
9	13710	Power Cable to suit GP203, 10m
10	90203	Mounting bracket to suit GP203



LUBE
Control

Lube Control Pty Ltd

CISO GT PLUS HIGH PRESSURE LUBRICATION PUMP

Robust, Versatile, Precision Lubrication



The GT Plus Lubrication pump is the heart of a progressive lubrication system that allows oil or grease (up to NLGI 2) to be distributed accurately to lubricate the lubrication points of a machine. The pumps are designed for intermittent or continuous operation to provide regular pre-programmed lubrication cycles as required. The pump exert up to 300bar pressure that allows grease points further than 20m to be lubricated.

Coupled with progressive divider valves and designed correctly they can be used to lubricate from 1 to many hundreds of lubrication points. A “primary” divider valve can be used to feed one or several secondary divider valves. Each progressive divider valve up to 24 outlets in the system contains series of spools allowing a predetermined quantity of grease to be discharged. These spools work in a progressive way to hinder any grease from taking the least path of resistance.

The system is easy to control and program with an integrated timer. It can also be monitored by an electrical switch on the main divider valve.

The CISO LUBE GT PLUS comes in various sizes; 2L, 4L, 8L and 12L with a choice of 12V, 24V or 240V, suitable for oil and grease.

Standard unit comes with one pumping element (4ml/min) but up to 5 pumping elements can be installed.

Characteristics

- Integrated timer with manual override
- Available in multiple reservoir sizes
- Suitable for OIL or GREASE
- High pressure output to be used with grease/oil divider valves
- 7 pin Tyco connector

Application

- Construction Machinery
- Agricultural Machinery
- Wind Power Equipment
- Food and Beverage Industry
- General Industry

Technical Information

No of pump outlets	1, 2, 3, 4 or 5
Filling grease nipple thread	1/4BSP
Flow rate per pump element	4ml/min (adjustable with adjustment washers 1ml/ washer – max 2)
Operating pressure	Max 30MPa, 300Bar
Reservoir sizes	2L, 4L, 8L, 12L
Lubricants	Oil (minimum 46cst), Grease NLGI 000, 00, 0, 1, 2
Voltages	12VDC, 24VDC, 240V
Operating temperature	-50C to +90C
IP Rating	IP67
Timer	Integrated control timer
Alarm	Low Level and pulse alarm (light and buzzer)

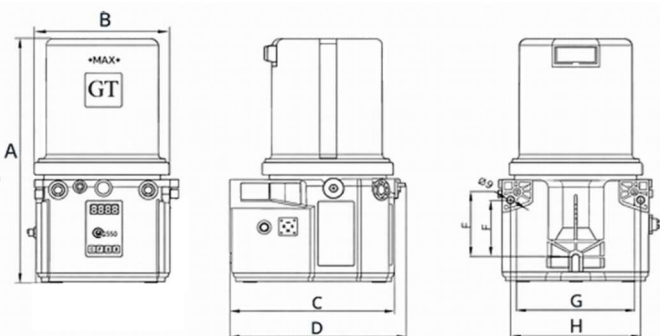
Integrated Control Timer



1	Easy to read LED display
2	Understandable of/off instructions
3	Reset function
4	Easy to navigate keys
5	Alarm signal
7	Low level indication
8	Password protection
9	Pre-lube capability
10	Manual override

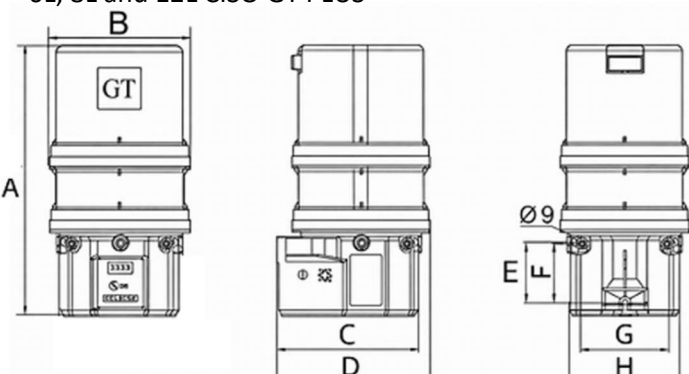
Dimensions

2L and 4L CISO GT PLUS



Size	A	B	C	D	E	F	G	H
2L	338	204	231.5	248	95.5	83.5	162.5	182
4L	378	204	231.5	248	95.5	83.5	162.5	182

6L, 8L and 12L CISO GT PLUS



Size	A	B	C	D	E	F	G	H
6L	358	235	231.5	256.5	95.5	83.5	162.5	182
8L	471	235	231.5	256.5	95.5	83.5	162.5	182
12L	585	235	231.5	256.5	95.5	83.5	162.5	182



**LUBE
Control**

Lube Control Pty Ltd

ORDERING CODE FOR GT PUMP

Example: CISO GT PLUS, 4L reservoir, 24VDC, with timer and low level for grease

Part Number Example: LC-GT-4L-24V-TMR-LL-G

Ordering code:

LC - GT - - - - -

Australian Prefix

Reservoir – Transparent Acrylic

2L Reservoir 2L
4L Reservoir 4L
6L Reservoir 6L
8L Reservoir 8L
12L Reservoir 12L

Voltage

12VDC 12V
24VDC 24V
240VAC 240V

Timer

With Timer TMR
Without Timer NTMR

Low Level

With Low Level LL
Without Low Level NLL

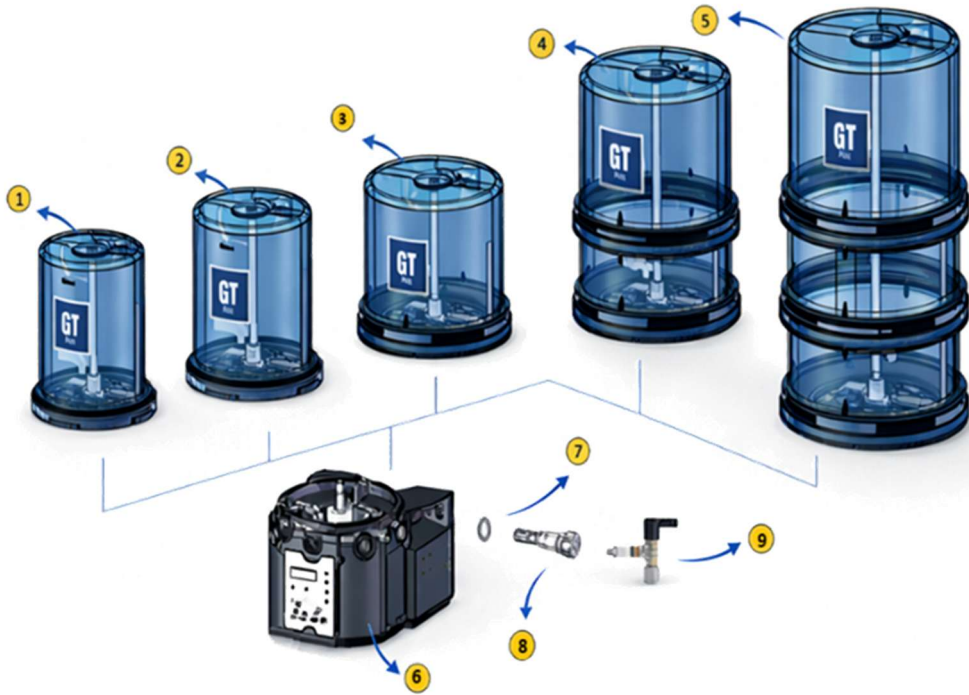
Lubricant type

Grease G
Oil O

All Australian CISO GT Plus pumps come standard with:

- 1 x Pumping Element
- 1 x Relief Valve
- 7 Pin Tyco Bayonet Plug
- Fill port – grease nipple for grease, filter strainer for oil

GT Plus Spare



1	GT-T-2L/KIT	CISO GT 2L Reservoir (Lid) stirrer and support
2	GT-T-4L/KIT	CISO GT 4L Reservoir (Lid) stirrer and support
3	GT-T-6L/KIT	CISO GT 6L Reservoir (Lid) stirrer and support
4	GT-T-8L/KIT	CISO GT 8L Reservoir (Lid) stirrer and support
5	GT-T-12LKIT	CISO GT 12L Reservoir (Lid) stirrer and support
6	CISOGTBASE12V CISOGTBASE24V CISOGTBASE240V	CISO GT BASE 12V with motor, gearbox, control timer CISO GT BASE 24V with motor, gearbox, control timer CISO GT BASE 240V with motor, gearbox, control timer
7	80535	CISO Adjustment washer 1ml/min
8	80536	CISO GT Plus Pumping Element 4ml/min
9	5FJ01	Pump outlet safety valve (35Mpa)
10	12710	CISO Power Cable - wiring assembly 5 wires, 10m – Suit Ciso GT with 7 pin Tyco
11	90234	CISO Mounting bracket to suit GT Plus



**LUBE
Control**

Lube Control Pty Ltd

CISO GT HEAVY HARD WIRED MULTIPOINT HIGH PRESSURE LARGE VOLUME LUBRICATION PUMP

Robust, Reliable, Accurate, Powerful



The GT Heavy Lubrication pump is the heart of a progressive lubrication system that allows oil or grease (up to NLGI 2) to be distributed accurately to lubricate the lubrication points of a machine. The pumps are designed for intermittent or continuous operation to provide regular pre-programmed lubrication cycles as required. The pump exert up to 300Bar pressure that allows grease points further than 20m to be lubricated.

Coupled with progressive divider valves and designed correctly they can be used to lubricate from 1 to many hundreds of lubrication points. A “primary” divider valve can be used to feed one or several secondary divider valves. Each progressive divider valve up to 24 outlets in the system contains series of spools allowing a predetermined quantity of grease to be discharged. These spools work in a progressive way to hinder any grease from taking the least path of resistance.

The system is easy to control and program with an integrated timer. It can also be monitored by an electrical switch on the main divider valve.

The CISOLUBE GT Heavy comes in two sizes; 30L and 60L with a choice of 12V, 24V or 240V, suitable for oil and grease.

Standard unit comes with one pumping element (4ml/min) but up to 5 pumping elements can be installed.

Characteristic

- Integrated timer with manual override
- Available in multiple reservoir sizes
- Suitable for OIL or GREASE
- High pressure output to be used with grease/oil divider valves

Application

- Heavy Machinery Steel works
- Agricultural Machinery
- Wind Power Equipment
- Mining Equipment

Technical Information

No of pump outlets	1, 2, 3, 4 or 5
Filling grease nipple thread	1/4BSP
Flow rate per pump element	4ml/min (adjustable with adjustment washers 1ml/ washer – max 2)
Operating pressure	Max 30MPa, 300Bar
Reservoir sizes	30L and 60L
Lubricants	Oil (minimum 46cst), Grease NLGI 000, 00, 0, 1, 2
Voltages	12VDC, 24VDC, 240V
Operating temperature	-50C to +90C
IP Rating	IP67
Timer	Integrated control timer
Alarm	Low Level and pulse alarm (light and buzzer)

CISO DXF DIVIDER PROGRESSIVE GREASE/OIL DIVIDER VALVE

Precise, Accurate, Versatile, Reliable

The DXF progressive grease divider valve is a sectional metering device giving flexibility to correctly design a Complete Lubrication System (CLS) for every machine. Each section has a predetermined outlet of lubricant (either 0.025ml - 0.045ml - 0.075ml - 0.105ml).

Each progressive divider valve comprises of:

- 1 x Inlet section
- Up to 10 x Middle section
- 1 x Tail sections

All sections are tightened via tie rods.

Operating principle of a DXF grease divider valve

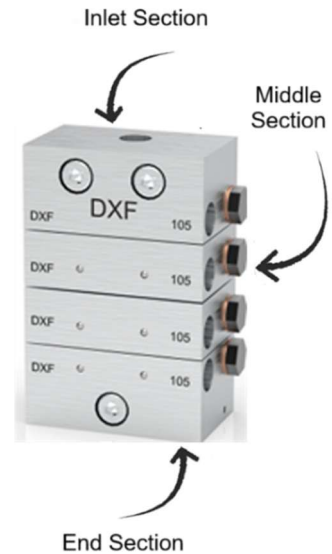
1. Grease enters DXF inlet section of the grease/oil divider valve from the grease pump
2. The Internal pistons move in a fixed sequence
3. Each section has an arrangement of pistons/spools
4. When grease pushes the first piston/spool, it completes its stroke and sends grease/oil to its outlet.
5. Only after one piston finishes its stroke does the next piston begin moving
6. Each piston/spool dispenses only the predetermined amount of lubricant
7. When the Grease pump cycles again, the pistons continue from where they left off

If one outlet becomes blocked, the entire piston sequence stops.

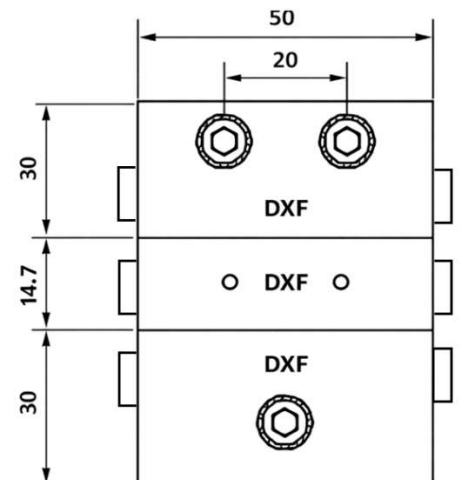
This allows monitoring of a system as the overpressure relief valve will exert grease.

In the middle of each section is a "singling screw" that can be removed and a closure plug (5PG11) needs to be installed on one side to double the quantity of on the grease/oil on the opposing side.

Check Valve fittings (Such as CV6M10 Check valve straight M10 male x 6mm tube compression fitting) are recommended on all outlets of the DXF divider blocks.

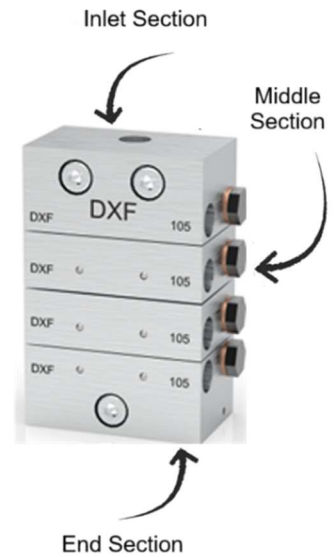


Number outlets	1 to 24
Discharge for each outlet	0.025ml - 0.045ml - 0.075ml - 0.105ml
Maximum pressure	300bar (30Mpa)
Lubricants	Oil (46cst), Grease NLGI 000, 00, 0, 1, 2
Number of cycles	Max. 300 cycles/min
Inlet thread	1/8BSP
Outlet thread	M10x1.0
Singling screw installed	Yes
Material	Zinc-nickel
Mounting Holes	5.5mm
Visual monitoring	Optional
Electrical monitoring	Optional



ORDERING CODE FOR DIVIDER VALVES – WITH EQUAL OUTPUTS

DXF3/2-EQUAL	DXF progress divider valve with 2 outlets - equal amounts
DXF3/3-EQUAL	DXF progress divider valve with 3 outlets - equal amounts
DXF3/4-EQUAL	DXF progress divider valve with 4 outlets - equal amounts
DXF3/5-EQUAL	DXF progress divider valve with 5 outlets - equal amounts
DXF3/6-EQUAL	DXF progress divider valve with 6 outlets - equal amounts
DXF4/7-EQUAL	DXF progress divider valve with 7 outlets - equal amounts
DXF4/8-EQUAL	DXF progress divider valve with 8 outlets - equal amounts
DXF5/9-EQUAL	DXF progress divider valve with 9 outlets - equal amounts
DXF5/10-EQUAL	DXF progress divider valve with 10 outlets - equal amounts
DXF6/11-EQUAL	DXF progress divider valve with 11 outlets - equal amounts
DXF6/12-EQUAL	DXF progress divider valve with 12 outlets - equal amounts
DXF7/13-EQUAL	DXF progress divider valve with 13 outlets - equal amounts
DXF7/14-EQUAL	DXF progress divider valve with 14 outlets - equal amounts
DXF8/15-EQUAL	DXF progress divider valve with 15 outlets - equal amounts
DXF8/16-EQUAL	DXF progress divider valve with 16 outlets - equal amounts
DXF9/17-EQUAL	DXF progress divider valve with 17 outlets - equal amounts
DXF9/18-EQUAL	DXF progress divider valve with 18 outlets - equal amounts
DXF10/19-EQUAL	DXF progress divider valve with 19 outlets - equal amounts
DXF10/20-EQUAL	DXF progress divider valve with 20 outlets - equal amounts
DXF11/21-EQUAL	DXF progress divider valve with 21 outlets - equal amounts
DXF11/22-EQUAL	DXF progress divider valve with 22 outlets - equal amounts
DXF12/23-EQUAL	DXF progress divider valve with 23 outlets - equal amounts
DXF12/24-EQUAL	DXF progress divider valve with 24 outlets - equal amounts



BUILD YOUR OWN ORDERING CODE FOR DIVIDER VALVES

4F025	DXF 25 Inlet Section
4F045	DXF 45 Inlet Section
4F075	DXF 75 Inlet Section
4F105	DXF 105 Inlet Section
4M025	DXF 25 Middle Section
4M045	DXF 45 Middle Section
4M075	DXF 75 Middle Section
4M105	DXF 105 Middle Section
4T025	DXF 25 End Section
4T045	DXF 45 End Section
4T075	DXF 75 End Section
4T105	DXF 105 End Section
4T045-V	DXF 45 End Section, with visual pin
4T075-V	DXF 75 End Section, with visual pin
4T105-V	DXF 105 End Section, with visual pin
4T045-E	DXF 45 End Section, with inductive sensor
4T075-E	DXF 75 End Section, with inductive sensor
4T105-E	DXF 105 End Section, with inductive sensor
4-B3103	Tie Rods DFX3 Sections
4-B3104	Tie Rods DFX4 Sections
4-B3105	Tie Rods DFX5 Sections
4-B3106	Tie Rods DFX6 Sections
4-B3107	Tie Rods DFX7 Sections
4-B3108	Tie Rods DFX8 Sections
4-B3109	Tie Rods DFX9 Sections
4-B3110	Tie Rods DFX10 Sections
4-B3111	Tie Rods DFX11 Sections
4-B3112	Tie Rods DFX12 Sections
3T1002	Divider Inlet Fitting with 1/8BSP grease nipple
BFD11/8BSP	Banjo Divider Inlet Fitting with grease nipple 1/8BSP
2U06	DXF Bridging Element
5PG11	DXF Closure Plug M10
CV6M10	Check valve straight M10 male x 6mm tube compression fitting



Lube Control Pty Ltd

LUBE
Control

CISO DSP DIVIDER

PROGRESSIVE GREASE/OIL DIVIDER VALVE

Precise, Accurate, Unique Cross Porting Ability



The DSP is a “Mono block” progressive divider valve that is ideal for applications where space is limited.

The DSP progressive divider valve:

- Is available in 6,8,10,12,18,20 and 22 outlets
- Has a fixed output of 0.2ml per outlet per cycle.
- Has a unique cross porting such that an outlet can be plugged doubling the next outlet
- Has the option to be monitored visually or electronically

Operating principle of a DSP grease divider valve

1. Grease enters DSP inlet section of the grease/oil divider valve from the Pump
2. The internal pistons move in a fixed sequence
3. When grease pushes the first piston/spool, it completes its stroke and sends grease/oil to its outlet.
4. Only after one piston finishes its stroke does the next piston begin moving
5. Each piston/spool dispenses only the predetermined amount of lubricant
6. When the Pump cycles again, the pistons continue from where they left off

If one outlet becomes blocked, the entire piston sequence stops.

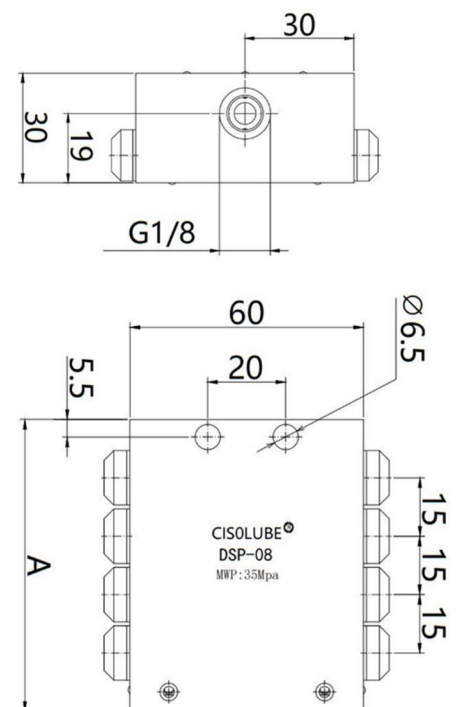
This allows monitoring of a system as the overpressure relief valve will exert grease.

Each outlet needs to be fitted with a conical check valve fitting

Number outlets	6,8,10,12,18,20 and 22
Discharge for each outlet	0.2ml
Maximum pressure	300bar (30Mpa)
Number of cycles	Max. 200 cycles/min
Lubricants	Oil (minimum 46cst), Grease NLGI 000, 00, 0, 1, 2
Inlet thread	1/8BSP
Outlet thread	M10x1.0
Outlet fittings	Conical check valve fitting necessary
Material	Zinc-nickel (Stainless upon Request)
Mounting Holes	6.5mm
Visual monitoring	Optional
Electrical monitoring	Optional

Dimensions

No of Outlets	6	8	10	12	14	16	18	20	22
A (mm)	60	75	90	105	120	135	150	165	180



ORDERING DETAILS

31N03	DSP Divider Valve 6 outlets
31N04	DSP Divider Valve 8 outlets
31N05	DSP Divider Valve 10 outlets
31N06	DSP Divider Valve 12 outlets
31N07	DSP Divider Valve 14 outlets
31N08	DSP Divider Valve 16 outlets
31N09	DSP Divider Valve 18 outlets
31N10	DSP Divider Valve 20 outlets
31N11	DSP Divider Valve 22 outlets
DSPVCP	Add Visual Cycle Pin (3.01502 & 1.00261)
124581	Add Inductive (Proxy Sensor) PNP Ultra sensor 4 pin M12 x 1
124582	2m cable - straight connections
124583	2m cable - elbow connections

INLET AND OUTLET FITTINGS

3T1002	Divider Inlet Fitting with 1/8BSP grease nipple
BFDI1/8BSP	Banjo Divider Inlet Fitting with grease nipple 1/8BSP
CVDDVXM10	Check valve Straight M10 male x M10 female
4MMCVFPU	Check valve straight M10 male x 4mm tube pushin fitting
6MMCVFPU	Check valve straight M10 male x 6mm tube pushin fitting
CV6M10	Check valve straight M10 male x 6mm tube compression fitting
CV6M10SS	Stainless check valve straight M10 male x 6mm tube compression fitting
CFNV6M	Check valve straight M10 male x 6mm tube comp fitting - SILVER
CFNV6MBL	Check valve straight M10 male x 6mm tube comp fitting - BLACK



+DSPVCP



124581



124582



CVDDVXM10



4MMCVFPU



CFNV6M



**LUBE
Control**

Lube Control Pty Ltd

CISO DSPP DIVIDER PROGRESSIVE GREASE/OIL DIVIDER VALVE

Adjustable Output, Precise, Accurate, Versatile



The CISO DSPP type metering device is a compact Mono block progressive divider valve with adjustable output by means of different metering screw sizes. The metering screw determines the output for a pair of outlets (opposite outlets).

The DSPP progressive divider valve:

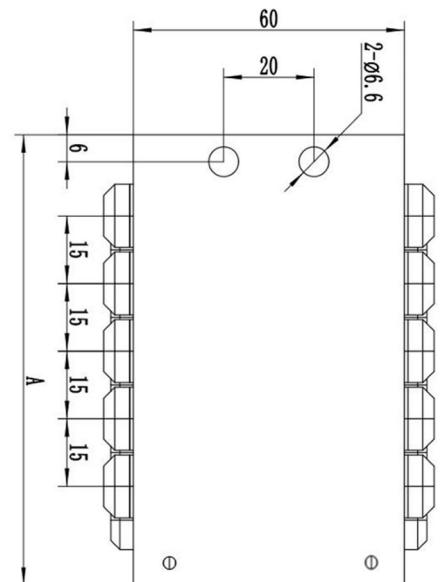
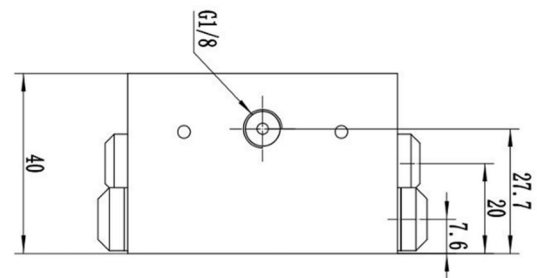
- Is available in 6,8,10,12,18,20 and 22 outlets
- Has variable outputs from 0.08ml to 1.8ml or 0.2ml per outlet per cycle.
- Has a unique cross porting such that an outlet can be plugged doubling the next outlet
- Has the option to be monitored visually or electronically

Operating principle of a DSPP grease divider valve

1. Grease enters DSPP inlet section of the grease/oil divider valve from the Pump
2. The internal pistons move in a fixed sequence
3. When grease pushes the first piston/spool, it completes its stroke and sends grease/oil to its outlet.
4. Only after one piston finishes its stroke does the next piston begin moving
5. Each piston/spool dispenses only the predetermined amount of lubricant
6. When the Pump cycles again, the pistons continue from where they left off

If one outlet becomes blocked, the entire piston sequence stops.
This allows monitoring of a system as the overpressure relief valve will exert grease.

Each outlet needs to be fitted with a conical check valve fitting



Number outlets	6,8,10,12,18,20 and 22
Discharge for each outlet	0.8ml/cycle to 1.8ml/cycle
Maximum pressure	350bar (35Mpa)
Lubricants	Oil (minimum 46cst), Grease NLGI 000, 00, 0, 1, 2
Inlet thread	1/8BSP
Outlet thread	M10x1.0
Outlet fittings	Conical check valve fitting necessary
Material	Nickel Plated
Mounting Holes	6.5mm
Visual monitoring	Optional
Electrical monitoring	Optional



**LUBE
Control**

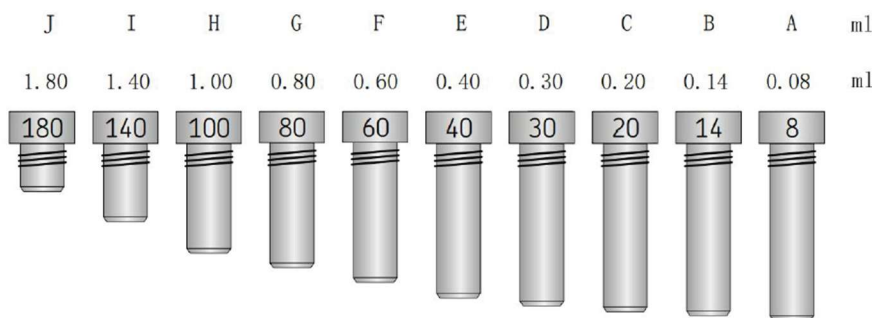
Lube Control Pty Ltd

ORDERING DETAILS

35N03	DSPP Divider Valve 6 outlets
35N04	DSPP Divider Valve 8 outlets
35N05	DSPP Divider Valve 10 outlets
35N06	DSPP Divider Valve 12 outlets
35N07	DSPP Divider Valve 14 outlets
35N08	DSPP Divider Valve 16 outlets
35N09	DSPP Divider Valve 18 outlets
35N10	DSPP Divider Valve 20 outlets
35N11	DSPP Divider Valve 22 outlets
DSPVCP	Add Visual Cycle Pin (3.01502 & 1.00261)
124581	Add Inductive (Proxy Sensor) DSPP PNP Ultra sensor 4 pin M12 x 1
124582	2m cable - straight connections
124583	2m cable - elbow connections
DSPP-A	DSPP Metering Screw 0.08ml
DSPP-B	DSPP Metering Screw 0.14ml
DSPP-C	DSPP Metering Screw 0.2ml
DSPP-D	DSPP Metering Screw 0.3ml
DSPP-E	DSPP Metering Screw 0.4ml
DSPP-F	DSPP Metering Screw 0.6ml
DSPP-G	DSPP Metering Screw 0.8ml
DSPP-H	DSPP Metering Screw 1.0ml
DSPP-I	DSPP Metering Screw 1.4ml
DSPP-J	DSPP Metering Screw 1.8ml

INLET AND OUTLET FITTINGS

3T1002	Divider Inlet Fitting with 1/8BSP grease nipple
BFDI1/8BSP	Banjo Divider Inlet Fitting with grease nipple 1/8BSP
CVDDVXM10	Check valve Straight M10 male x M10 female
4MMCVFPU	Check valve straight M10 male x 4mm tube pushin fitting
6MMCVFPU	Check valve straight M10 male x 6mm tube pushin fitting
CV6M10	Check valve straight M10 male x 6mm tube compression fitting
CV6M10SS	Stainless check valve straight M10 male x 6mm tube compression fitting
CFNV6M	Check valve straight M10 male x 6mm tube comp fitting - SILVER
CFNV6MBL	Check valve straight M10 male x 6mm tube comp fitting - BLACK





LUBE
Control

Lube Control Pty Ltd

CISO VSP DIVIDER

PROGRESSIVE GREASE/OIL DIVIDER VALVE



Modular design, Precise, Low Maintenance, Versatile

The VSP modular distributor valve ensures accurate lubrication and is suitable for all types of harsh operating conditions, making it an ideal lubricant-distribution solution.

The divider consists of two main components:

- The base, made up of a minimum of three elements.
- The metering valves, available in both single-outlet and double-outlet versions

Thanks to its modular design, the system can be easily expanded, and metering elements can be replaced without removing existing pipework, ensuring low maintenance costs. The modularity of the divider also allows lubrication points to be grouped according to the specific requirements of the system.

Operating principle of a VSP grease divider valve

1. Grease enters VSP inlet section of the grease/oil divider valve from the Pump
2. The internal pistons move in a fixed sequence
3. When grease pushes the first piston/spool, it completes its stroke and sends grease/oil to its outlet.
4. Only after one piston finishes its stroke does the next piston begin moving
5. Each piston/spool dispenses only the predetermined amount of lubricant
6. When the Pump cycles again, the pistons continue from where they left off

Characteristics

- Easy servicing as outlets are located on baseplate
- Flexible due to exchangeable metering segments
- Visual or electrical monitoring possible
- Dummy segments with no output available
- Adjustable by consolidating outlets internally or externally

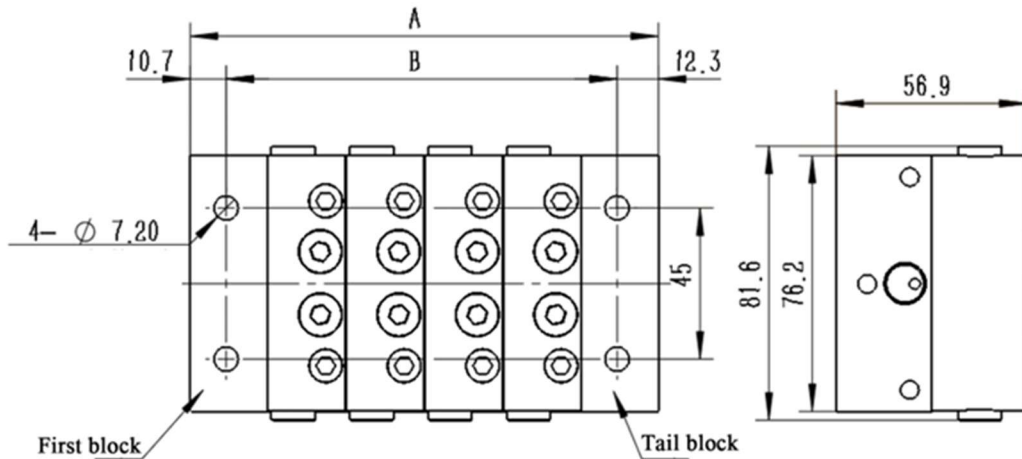
Number outlets	1 to 16
Discharge for each outlet	0.08ml/cycle to 1.31ml/cycle
Maximum pressure	241Bar
Operating temperature	-30C to 150C
Lubricants	Oil (minimum 46cst), Grease NLGI 000, 00, 0, 1, 2
Inlet thread	1/4BSP
Outlet thread	1/8BSP
Material	Nickel Plated
Mounting Holes	7.2mm
Visual monitoring	Optional
Electrical monitoring	Optional



**LUBE
Control**

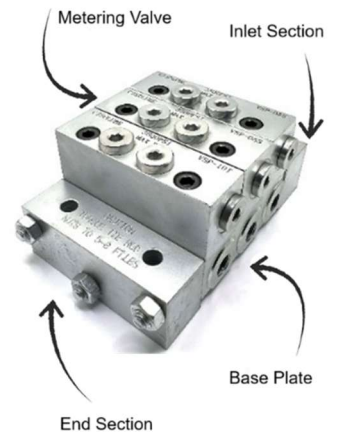
Lube Control Pty Ltd

Dimensions



Ordering Details

VSP3-6	VSP Divider Valve 6 outlets
VSP4-8	VSP Divider Valve 8 outlets
VSP5-10	VSP Divider Valve 10 outlets
VSP6-12	VSP Divider Valve 12 outlets
VSP7-14	VSP Divider Valve 14 outlets
VSP8-16	VSP Divider Valve 16 outlets
5F105-1	Add Blockage Indicator to suit VSP VSP Relief Valve (safety Valve 207bar/3000psi) 1/8BSP
PLUG1/8BSP	Closure plug 1/8BSP with head
152365	VSP Cycle indicator 7/16-20UNF
B3103	Tie Rod VSP 3 Sections
B3104	Tie Rod VSP4 Sections
B3105	Tie Rod VSP 5 Sections
B3106	Tie Rod VSP 6 Sections
B3107	Tie Rod VSP 7 Sections
B3108	Tie Rod VSP 8 Sections
VSPMV05S	CISO VSP Metering Valve 05S Single
VSPMV10S	CISO VSP Metering Valve 10S Single
VSPMV15S	CISO VSP Metering Valve 15S Single
VSPMV20S	CISO VSP Metering Valve 20S Single
VSPMV25S	CISO VSP Metering Valve 25S Single
VSPMV30S	CISO VSP Metering Valve 30S Single
VSPMV35S	CISO VSP Metering Valve 35S Single
VSPMV40S	CISO VSP Metering Valve 40S Single
VSPMV5T	CISO VSP Metering Valve 05T Twin
VSPMV10T	CISO VSP Metering Valve 10T Twin
VSPMV15T	CISO VSP Metering Valve 15T Twin
VSPMV20T	CISO VSP Metering Valve 20T Twin
VSPMV25T	CISO VSP Metering Valve 25T Twin
VSPMV30T	CISO VSP Metering Valve 30T Twin
VSPMV35T	CISO VSP Metering Valve 35T Twin
VSPMV40T	CISO VSP Metering Valve 40T Twin
VSPWPBP	CISO VSP Base Plate
VSPINLET	CISO VSP Inlet Section
VSPEND	CISO VSP End Section



TIE RODS



PLUG1/8BSP



5F105-1



152365

SPARE PARTS

CONTROLLERS

MC-III	CISO Compact Controller
MC-II-A	CISO External Controller

FILLING

CLS-REMFILLASBLY	Complete Lube System Remote Fill Point assembly with 180-micron Filter, hose and sign
80221	Female coupling to fill your lubricators 1/4BSP
80220	Male quick fill connector 1/4BSP
GGUN-400G-PG	400g pistol grip grease gun
GGUN-400G-LEV	400g lever action grease gun
GGUN-450G-PG	450g pistol grip grease gun
GGUN-450G-LEV	450g lever action grease gun
GGUN-20KG-KIT	20kg air operated grease kit c/w pump, lid, follower plate, hose and on off gun
GGUN-180KG-KIT	180kg air operated grease kit c/w pump, lid, follower plate, hose and on off gun
HPTASBLY450G	High Pressure test grease gun 450g with pressure gauge and relief valve
FS450	450g Filling Syringe, for bulk filling auto lube systems
FS400	400g Filling Syringe, for bulk filling auto lube systems
HFA22M	High Flow adapter for FS450 and FS400 with M22 thread
HFA20M	High Flow adapter for FS450 and FS400 with M20 thread

FILTERS

31F10	Inlet Inline filter M10M x M10F, 70 micron
AL45180	CISO Inline filter 1/4BSPFx1/4BSPF, 180 micron. C/w 1/4BSPM x M10F

MONITORING

101918	ASSALUB Grease Flow Meter - Standard - "Aluminum"
101919	ASSALUB Grease Flow Meter - Standard - "Stainless 316"
907133	ASSALUB Elbow Connector with LED, 5m
102525	ASSALUB Grease Meter MK111 1/8BSP
102525-1	ASSALUB Grease Meter MK111 M10x1.0
0102525-2	ASSALUB Grease Meter MK111 1/8NPT

OIL BRUSHES

BR-R-25-NYL-PR	Premium Oil Brush Round 1/8BSP female inlet with adjustable shank 108mm Long (Dia 25mm) Nylon
BR-F-57-NYL-PR	Premium Oil Brush Flat 1/8BSP female inlet, with adjustable shank 87mm Long (57mm x 9mm), Nylon



MC-II-A

MC-III



CLS-REMFILLASBLY



80221



80220



AL45180



31F10



101918



907133



102525



BR-R-25-NYL-PR



BR-F-57-NYL-PR

FOR COMPLETE ACCESORIES:

SEE FAT ADDER REMOTE GREASE LINES AND AUTO LUBE FITTINGS

