



Lube Control Pty Ltd

CISO DSP DIVIDER PROGRESSIVE GREASE/OIL DIVIDER VALVE



Precise, Accurate, Unique Cross Porting Ability

The DSP is a “Mono block” progressive divider valve that is ideal for applications where space is limited.

The DSP progressive divider valve:

- Is available in 6,8,10,12,18,20 and 22 outlets
- Has a fixed output of 0.2ml per outlet per cycle.
- Has a unique cross porting such that an outlet can be plugged doubling the next outlet
- Has the option to be monitored visually or electronically

Operating principle of a DSP grease divider valve

1. Grease enters DSP inlet section of the grease/oil divider valve from the Pump
2. The internal pistons move in a fixed sequence
3. When grease pushes the first piston/spool, it completes its stroke and sends grease/oil to its outlet.
4. Only after one piston finishes its stroke does the next piston begin moving
5. Each piston/spool dispenses only the predetermined amount of lubricant
6. When the Pump cycles again, the pistons continue from where they left off

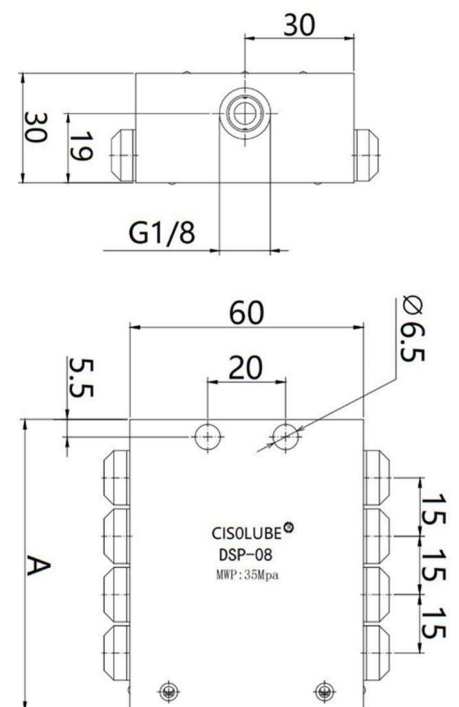
If one outlet becomes blocked, the entire piston sequence stops. This allows monitoring of a system as the overpressure relief valve will exert grease.

Each outlet needs to be fitted with a conical check valve fitting

Number outlets	6,8,10,12,18,20 and 22
Discharge for each outlet	0.2ml
Maximum pressure	300bar (30Mpa)
Number of cycles	Max. 200 cycles/min
Lubricants	Oil (minimum 46cst), Grease NLGI 000, 00, 0, 1, 2
Inlet thread	1/8BSP
Outlet thread	M10x1.0
Outlet fittings	Conical check valve fitting necessary
Material	Zinc-nickel (Stainless upon Request)
Mounting Holes	6.5mm
Visual monitoring	Optional
Electrical monitoring	Optional

Dimensions

No of Outlets	6	8	10	12	14	16	18	20	22
A (mm)	60	75	90	105	120	135	150	165	180





Lube Control Pty Ltd

ORDERING DETAILS

31N03	DSP Divider Valve 6 outlets
31N04	DSP Divider Valve 8 outlets
31N05	DSP Divider Valve 10 outlets
31N06	DSP Divider Valve 12 outlets
31N07	DSP Divider Valve 14 outlets
31N08	DSP Divider Valve 16 outlets
31N09	DSP Divider Valve 18 outlets
31N10	DSP Divider Valve 20 outlets
31N11	DSP Divider Valve 22 outlets
DSPVCP	Add Visual Cycle Pin (3.01502 & 1.00261)
124581	Add Inductive (Proxy Sensor) PNP Ultra sensor 4 pin M12 x 1
124582	2m cable - straight connections
124583	2m cable - elbow connections

INLET AND OUTLET FITTINGS

3T1002	Divider Inlet Fitting with 1/8BSP grease nipple
BFDI1/8BSP	Banjo Divider Inlet Fitting with grease nipple 1/8BSP
CVDDVXM10	Check valve Straight M10 male x M10 female
4MMCVFPU	Check valve straight M10 male x 4mm tube pushin fitting
6MMCVFPU	Check valve straight M10 male x 6mm tube pushin fitting
CV6M10	Check valve straight M10 male x 6mm tube compression fitting
CV6M10SS	Stainless check valve straight M10 male x 6mm tube compression fitting
CFNV6M	Check valve straight M10 male x 6mm tube comp fitting - SILVER
CFNV6MBL	Check valve straight M10 male x 6mm tube comp fitting - BLACK



+DSPVCP



124581



124582



CVDDVXM10



4MMCVFPU



CFNV6M