



Lube Control Pty Ltd



Instruction Manual for Industrial Hose Reel





WARNING:

Read carefully and understand all INSTRUCTIONS before operating. Failure to follow the safety rules and other basic safety precautions may result in serious personal injury.

Save these instructions in a safe place and on hand so that they can be read when required.

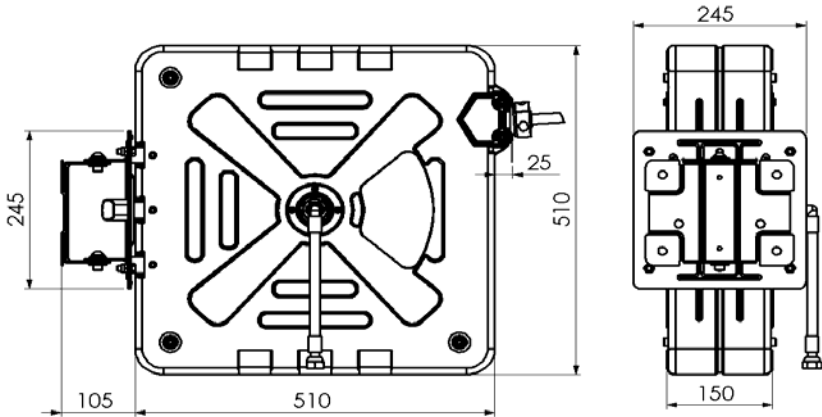
Technical Details

Item	Max Pressure	Hose Working Temperature	Hose Capacity		
		(°C/ °F)	Material	I.D.(inch)	Length(m/ft)
29507154	180psi (12Bar)	-30-60°C (-22-140°F)	PU	1/2"	15/ 50
29507153		-30-60°C (-22-140°F)	PU	3/8"	
29507154	300psi (20Bar)	0-60°C (32-140 °F)	PVC	1/2"	15/ 50
29507154		-30-100°C (-22-212 °F)	Rubber	1/2"	
29507153		0-60°C (32-140 °F)	PVC	3/8"	
29507153		-30-100°C (-22-212 °F)	Rubber	3/8"	
29508154	2000psi (138Bar)	-30-100°C (-22-212 °F)	SAE R1	1/2"	15/ 50
29508153	2250psi (155Bar)	-30-100°C (-22-212 °F)	SAE R1	3/8"	
29509152	5000psi (345Bar)	-30-100°C (-22-212 °F)	SAE R2	1/4"	
295091523	4000psi (275Bar)	-30-100°C (-22-212 °F)	SAE R2	3/8"	



**LUBE
Control**

Lube Control Pty Ltd



Safety Precautions

GENERAL SAFETY RULES

⚠️ WARNING: Read and understand all instructions.

⚠️ WARNING: The warnings, cautions, and instructions discussed in this instruction manual cannot cover all possible conditions or situations that could occur. It must be understood by the operator that common sense and caution are factors which cannot be built into this product, but must be supplied by the operator.

Hose Reel Safety Precautions

1. Use proper eye protection when assembling and using the hose reel
2. Keep children away from the work area
3. Personal injury and/or equipment damage may result if proper safety precautions are not observed.
4. Ensure that reel is properly installed before connecting input and output hoses.
5. Bleed fluid/gas pressure from system before servicing reel.
6. Before connecting reel to supply line ensure that pressure does not exceed maximum working pressure rating of reel.

7. Remember, even low pressure is very dangerous and can cause personal injury or death.
8. If a leak occurs in the hose or reel, remove system pressure immediately
9. Ensure that reel, hose, and equipment being service are properly grounded.
10. If reel ceases to unwind or rewind, remove system pressure immediately.
11. Do not pull or jerk on hose.

Installation

Fitting the bracket (fig1)

Fix bracket A to the house reel

Impress the 6 screws, fixing them in sequence.

Then apply the plastic plugs B in the free holes.

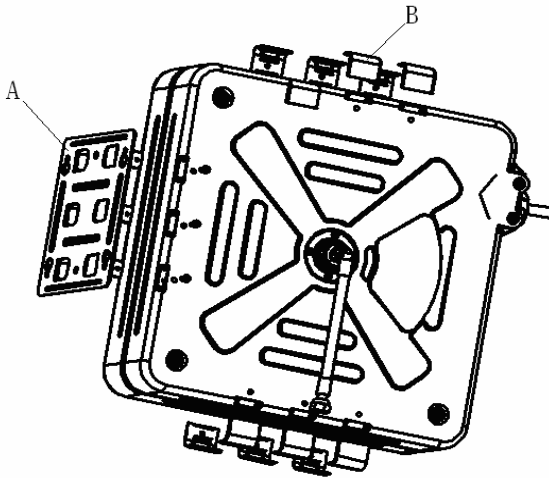


fig1

Hose reel installation

Prior to mounting the hose reel, ensure that the supply line pressure does not exceed the maximum working pressure of the hose reel.

Unpack and inspect reel for damage. Turn by hand to check for smooth operation. Check for completeness.

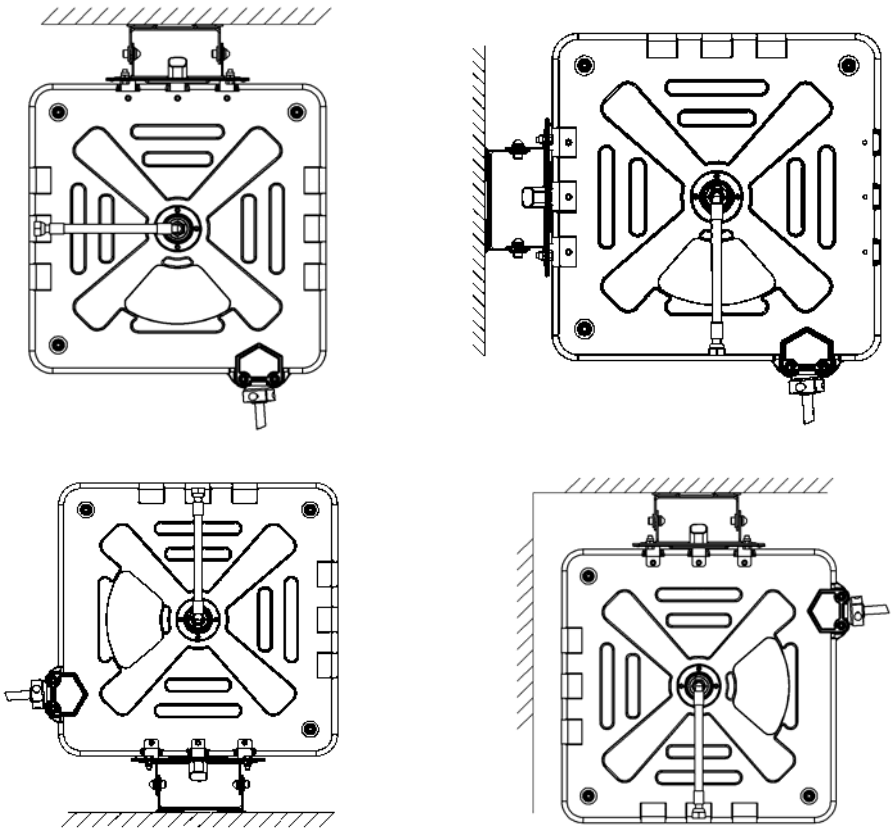
Position the reel on the floor, wall or ceiling. Secure into place using four



**LUBE
Control**

Lube Control Pty Ltd

mounting bolts



Operation

1. Check reel for correct operation by slowly pulling out the hose. A “clicking” noise will be heard every half revolution of the drum.
2. To latch the reel, pull out the hose and allow it to retract after hearing the first second or third “click”.
3. To unlatch, slowly pull out the hose until the “clicking” noise stops, then let the cable retract until the cable stopper rests against the cable guide.

Page5 of 8



**LUBE
Control**

Lube Control Pty Ltd

4. If necessary, adjust spring tension on reel by adding or removing wraps of hose from spool, one wraps at a time, until desired tension is obtained. Add wraps to increase tension. Remove wraps to decrease tension.

Note: To avoid damage to the reel, always hold on to the cable while it is rewinding.

Maintenance

Make sure the hose is in proper working order and that the insulation is not cut or worn as this could represent a hazard and jeopardize operation.

Clean the hose with a cloth dipped in warm water to remove dirt or deposits and ensure correct rewinding.

Do not use detergents or solvents which could prove incompatible with cable-winder materials.

If the event of having to perform maintenance on the electrical, mechanical parts or replace the cable, contact an authorized after-sale service center.

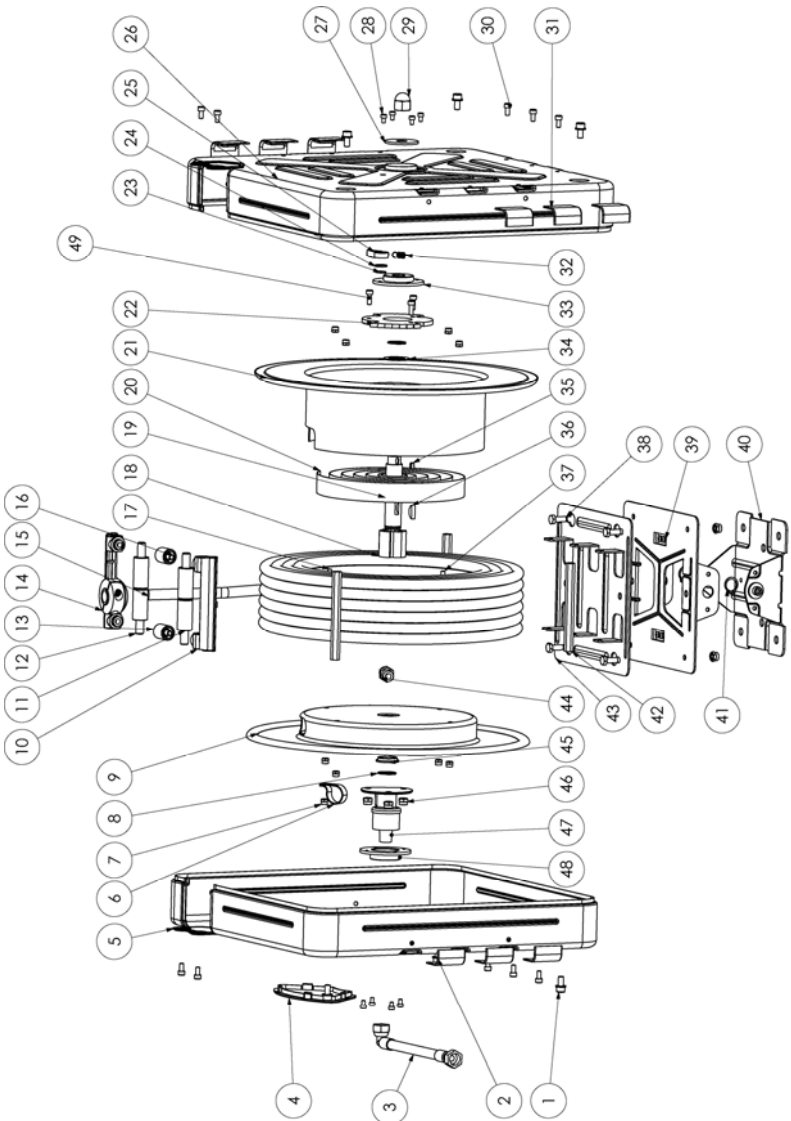
Dismantling of the unit by unskilled personal could prove hazardous; the risk involved mainly concern the preloaded springs.

Limited Warranty

1. The manufacturer warrants this hose reel against defects in material and craftsmanship, for a period of 12 months from date of purchase.
2. Manufacturer's liability is limited to replacement or repair of defective material within the warranty period, when returned freight prepaid to the distributor or their designated service depot.
3. The warranty does not cover damage caused by accident, misuse or faulty installation.
4. The reel must be installed and maintained in compliance with the instructions.



Explore and Parts list



**2950 Parts List**

Part No.	Description	Quantity	Part No.	Description	Quantity
1	Screw	6	25	Ratchet	1
2	Washer	6	26	Right Cover	1
3	Lead-in Hose Assy	1	27	Washer	1
4	Small Cover	1	28	Screw	8
5	Left Cover	1	29	Nut	1
6	Clamp	1	30	Screw	13
7	Nut	9	31	Protecting Cover	12
8	Retainer	2	32	Ratchet Spring	1
9	Left Drum	1	33	Bushing	1
10	Guide plate	2	34	Washer	1
11	Long Roller	4	35	Stator	1
12	Long Roller Axle	2	36	Half-circle Stator	1
13	Short Roller	2	37	Bolt	3
14	Hose Stop Assy	1	38	Bolt	4
15	Long Hose Assy	1	39	Swivel Bracket	1
16	Short Roller Axle	2	40	Settled Bracket	1
17	Bolt	1	41	Retainer	2
18	Spring Core	1	42	Pin	3
19	Main Axle	1	43	Base	1
20	Main Spring	1	44	Tube Fitting	1
21	Right Drum	1	45	Bushing	1
22	Lock Ring	1	46	Nut	7
23	Retainer	1	47	Swivel Assy	1
24	Washer	1	48	Bushing	1

**WARNING**

Your risk from these exposures varies, depending on how often you do this type of work. To reduce your exposure to these chemicals: work in a well ventilated area, and work with approved safety equipment, such as those dust masks that are specially designed to filter out microscopic particles.